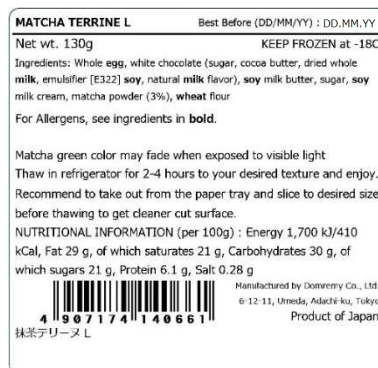


## MATCHA TERRINE L

FACTORY LOCATIONS  
O TAKASAKI, GUNMA  
N/A HARUNA, GUNMA  
N/A OKAYAMA, OKAYAMA

## Product Specifications

Product Name / Flavor	
MATCHA TERRINE L	
EAN/JAN	MSRP
4907174 140661	N/A
Description	
Perfect Matcha dessert for Matcha lovers. Strong Matcha taste but sweet white chocolate will balance the bitterness for great after taste. FOR FOOD SERVICE	
Shelf Life	Suggestive Storage
540 DAYS	FROZEN (-18C)
5 DAYS	REFRIGERATED (10C)
Ingredient Statement	
Whole <b>egg</b> , white chocolate (sugar, cocoa butter, dried whole <b>milk</b> , emulsifier [E322] <b>soy</b> , natural <b>milk</b> flavor), <b>soy</b> milk butter, sugar, <b>soy</b> milk cream, matcha powder (3%), <b>wheat</b> flour	
Allergens	
EGG, MILK, SOY, WHEAT	
Process Flow	
Raw Materials Receiving→ Inspection→ Measurement→ [Chocolate] Mixing white chocolate, soy milk and soy milk butter→ Melt it in a bain-marie (50°C for 15min)→ [Mixing] Mix chocolate with other ingredients→ Pour into paper tray→ Baking (145-165°C 22min)→ Cool down in refrigerated room→ Wrap with pillow film→ Place a label on top of the film→ Metal Detector (1.5Fe/3.0SuS)→ Visual inspection→ Cartoning→ Freezer→ Dispatch	



## Packing Configurations

	count	W	L	H	Weight
UNIT	1 p	130	130	45 mm	130 g Net
INNER BOX	- p	-	-	- mm	- g Net
MASTER CARTON	18 pkt	400	300	100 mm	4 kg Gross
PALLET	162 ctns	120	100	195 cm (incl. pallets)	(TlxHI : 9x18)



## Nutritional Information

Typical value per 100g

Energy	1,700 kJ	Carbohydrates	30 g
Energy	410 kCal	of which sugars	21 g
Fat	29 g	Protein	6.1 g
of which saturates	21 g	Salt	0.28 g